

NanoQuest Compact Standalone Access Control System



PRODUCT DESCRIPTION

The NanoQuest is a compact standalone proximity card reader and access controller. The rugged, one-piece unit, housing both the access control electronics and the 125kHz proximity reader technology, is easy to install and operate.

A single NanoQuest unit can control access through a single door for up to 600 authorised users. In addition to providing access control, the NanoQuest can be used as a secure method of controlling devices such as intruder alarm panels, lighting and heating.

Features include free exit, arming, alarm output, door monitoring and auxiliary input/output. The configuration of features and the addition/removal of User cards are simple operations using a 'Master' card. Special 'Auxiliary' cards can also be added to control auxiliary devices.

The NanoQuest can also output card data in 26-bit Wiegand format so that it can be used as a standard reader connected to an external controller in any future migration to a larger system.

SPECIFICATIONS

Electrical

Supply Voltage:	5V DC to 16V DC
Current Requirement:	70 mA maximum

Physical

Dimensions (mm):	116 x 40 x 17 (H x W x D)
Colour:	Black
Material:	ABS plastic - stabilised against ultra violet light
Rating:	IP66 - suitable for external and internal use

Environmental

Operating Temperature:	-30°C to 50°C Ambient
------------------------	-----------------------

Outputs

Strike Relay:	Change-over contacts rated at 1A at 30V DC. Programmable strike time 0.5 to 10 seconds or latching.
Auxiliary Output:	Open-collector output for auxiliary control (latch or pulse options)
Alarm:	Open-collector output for external alarm (latch or pulse options)
Wiegand Data:	26-bit Wiegand data for use with external controller

Inputs

Free Exit:	Clean contact, ground to activate
Auxiliary/Arming:	Clean contact, ground to disable, open contact to enable
Door Monitor:	Clean contact, ground to indicate door closed (if activated)

Card Types

Master Card:	Used for Configuration and adding/removing User cards
User Card:	Used to gain access to restricted area
Auxiliary Card:	Used to gain access to restricted area and to activate auxiliary devices

Connection

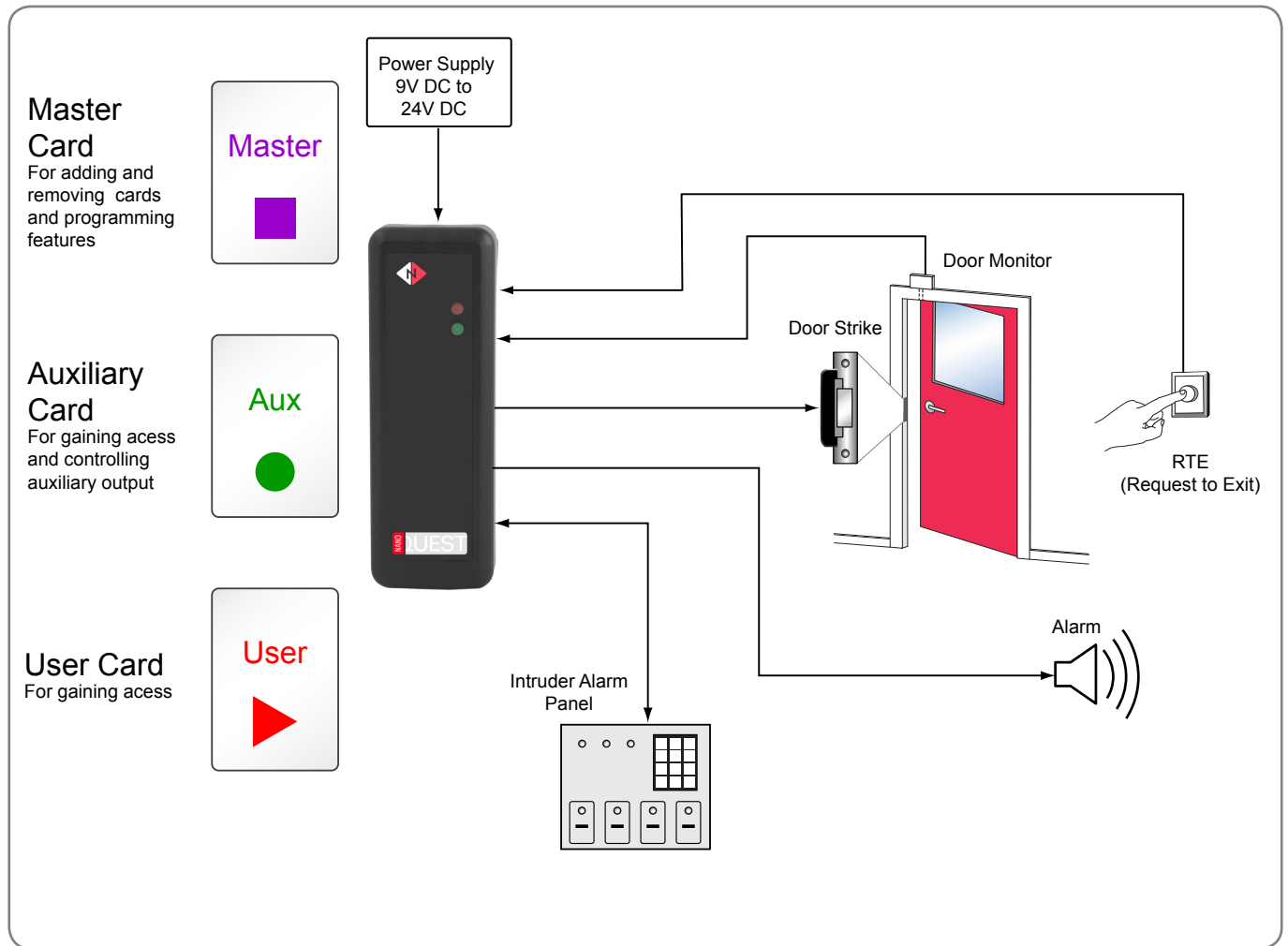
Cable Length:	300mm as standard - 3m option available on request
Conductors:	15

Operational

Reading Range:	Up to 80mm depending upon the type of card or token
Buzzer:	On/Off selectable
Indicators:	One red 4mm LED and one green 4mm LED.

NanoQuest Compact Standalone Access Control System

Connection Details



Ordering Information

N-QUEST-00

NP-CARD-PK-00

NP-CARD-PK-01

NP-CARD-PK-02

NP-CARD-PK-03

NanoQuest standalone proximity card reader/controller plus 2 Master cards

Pack of 10 proximity cards for use with NanoQuest (lost cards can't be individually deleted)

Pack of 10 proximity cards in filing wallet with duplicate 'administration' cards and a card marker pen

Pack of 25 proximity cards in filing wallet with duplicate 'administration' cards and a card marker pen

Pack of 40 proximity cards in filing wallet with duplicate 'administration' cards and a card marker pen